

THE WITTENBERG DOOR



FEBRUARY 2021 EMMANUEL LUTHERAN CHURCH ELCBREMERTON.ORG
 2509 PERRY AVE. BREMERTON WA 98310

INSIDE THIS ISSUE:

PASTOR TIM'S RETIREMENT	1
PASTOR BLAKE'S MESSAGE	2
"THE BIG LEAK"	3
FIRST FRUITS	4
WASHINGTON STATE HISTORY PT'S RETIREMENT	4
SPOTLIGHT	5
BIRTHDAYS AND ANNIVERSARIES MEMBERS SERVING	5

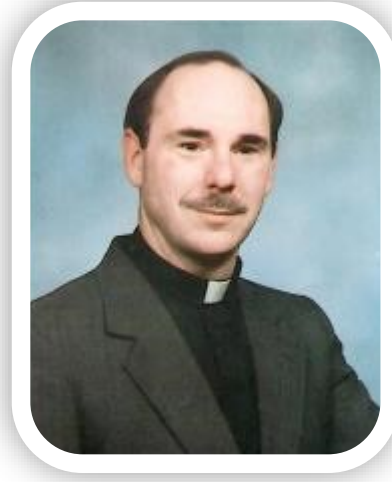
**In case of an
Emergency**
 Please call
Pastor Blake at
760- 637-4099

Pastor Tim Cartwright retires after 40 years of service to our Lord!

Pastor Tim was ordained on September 14, 1980 and preached his last sermon on December 27, 2020. Sadly many of us were not able to attend because of the COVID pandemic. However, after all of us are comfortable coming back to church we are planning on a celebration to recognize Pastor Tim and his 40 years of service. Thank You Pastor Tim!!!!



Pastor Tim's installation - 9/14/80



Family of God—associate pastor -1989



Pastor Blake's Message

"Lenten Examination"

We are entering the season of Lent this month, a period of forty days that we spend emphasizing the Passion of our Lord Jesus and the Atonement He made for us on the Cross. It is a bit of a somber time, in which we reflect on the reasons He died for us, repent of our sins, and often times afflict ourselves to better understand what Jesus went through – both in His ministry and on the Cross.

This whole season is about preparing ourselves for Good Friday and Easter. Typically, people "give something up" for Lent, and this is known as a Lenten Sacrifice. The thinking goes that, since Jesus went without food or water during His forty days in the desert, we should give something up as well. For some this means giving up candy or alcohol, and for others it can mean avoiding a personal hobby. Others engage in a "Lenten discipline," like fasting or large daily devotions, to prepare for the joy of Easter.

But what if we engaged in a more... *introspective* Lenten discipline? What if we decided to put ourselves under the microscope a little and see what might be lacking in our faith?

This was a personal project of Soren Kierkegaard. He was a pastor in Denmark's national Lutheran church, and found himself perplexed by the schism between what Christianity teaches us and how "Christians" around him were living. He concluded that the thing people needed was *authenticity* – to act, live, and think in harmony with our Christian beliefs. Because so many people in Denmark never examined if they were authentic Christians, Kierkegaard nearly tore his hair out watching them ignore the needs of the poor while proclaiming that the Lutheran Confessions were the true test of orthodoxy. For the "gloomy Dane," as he was often called, it is one thing to *believe* Christian doctrine; it is quite another (and something sorely needed) to *live* as a Christian in addition to those beliefs.

For this season of Lent, this might be a good option for many in our church. St. Paul exhorts us in 2 Corinthians 13:5, "Examine yourselves to see whether you are living in the faith. Test yourselves." Keeping a journal and prayerfully writing down questions and answers like "Do I have a hard time believing what the Scriptures say?" or "How much do I do in the name of Jesus these days?" would help us see where we are lacking. A couple of these a night, and we may just find the ways that God wants to direct us in our walk with Him. Or perhaps we will find we are doing much better than our discouraged hearts can see, and God is strengthening us for the walk.

“The Big Leak”

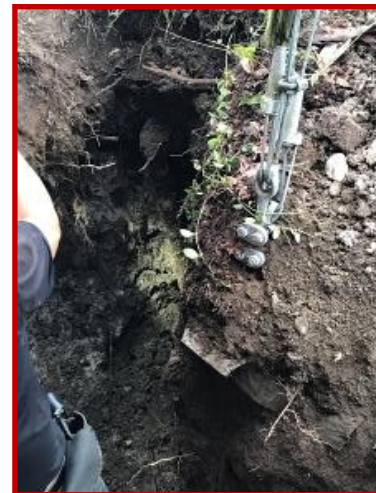


By now, many of you have heard about our BIG LEAK at ELC. If you have not heard, you will be blown away to learn that we had a water leak that was pumping around 3,000 gallons of water a day into the ground.



Between Steve and Glen, Puget Sound Power was called in to secure a power pole and a leak detector/fixer was contracted to repair the leak. This all took time to arrange. Meanwhile, Steve and Judy had to climb out of bed at 5 am each day to turn the water on for the Child Care Center and Glen and Steve would meet each night at 7:00 pm to turn it off each day. Thank the Lord, “we do indeed” have a “few good men and women” at ELC to take on this kind of project. On Thursday, February 3rd, the leak was under control. NOW the damage! The cost estimate is around \$7,500. By-the-way, if anyone want to write out a check for the whole amount, that would be greatly appreciated. However, since there is little hope of that happening, **HERE IS WHAT YOU CAN DO:** Write a check for any amount you feel comfortable with and slip it into the offering or give it to Judy. On the check where it is printed, “for” just write “The Big Leak”. Our church needs your help and support.

Thanks, Your Church Council



The Religious History of the State of Washington

THE JOURNEY

I have used many resources to assemble this series on "The Religious History of the State of Washington". If you are a Christian and a resident of Washington, this is not just a story – it's YOUR story.

PART SEVEN—William Keils Perfect World



Religious fervor along with utopian ideals inspire German Immigrant, William Keil, to found a mystical colony near the head of Willapa Bay. Born in 1812, Prussian Keil emigrated to New York, continued his tailor's trade and practiced Lutheranism. Then, following the Spiritual plan in the Acts of the Apostles, sold his farm in Bethel, Missouri to finance a trip to the West. On November 1, 1855, Keil and 250 followers arrived at today's Raymond, Washington. They cleared land, planted crops and built log houses throughout the valley where Keil had buried his son, Willie, whose body had been transported in a lead coffin from Missouri. Willie's grave is today a tourist attraction beside State Highway 6 in Pacific County. Up the road from the gravesite are German Swiss names on mail boxes and neatly tended properties in the villages of Menlo, Lebam and Frances. Keil's Willapa pioneers sang German hymns in their church services, a precursor to the musical and academic traditions of what would be the first successful example of a Washington State communal living experiment shaped by religiosity. Larry Farner



From the Turowski and McConnell family:

We want to thank Emmanuel members for their prayers, cards, and expressions of sympathy and Christian love following the recent death of Patti, our sister (Miki's) and daughter (Mae's). We are thankful for all of you and look forward in expectant hope to the Sunday when we can safely rejoin the congregation to worship our loving and merciful Lord. May God continue to bless all of you.



SouperBowl Victory

The little Church that gives big makes headlines "Again". When we told the workers at the Food-bank last Monday that because of Covid we only had around 25 members attending, they were amazed at our generosity. Hunger has exploded across our State. In 2019, 800,000 people in our State were food insecure and using food banks. Now there are over 2 MILLION needing help. Most of the new numbers are those who have never used food banks before. It is older people, children staying home doing virtual learning, and those who have lost their jobs. We at Emmanuel see a need and we help! Just this past Sunday (Souper bowl Sunday) we gave 88 cans of soup, with a total overall food donation of 192 pounds. Each and every month YOU feed the hungry. **"YOU ARE THE WORLD"**.

Sally Farner

February Birthdays

2.....Tiffany Johnson
 5Pat Alcantra
 14.....Ward Erickson IV
 15Bob Klempan
 17... Brandee Haynes, Childcare Sup.
 23.....Jim Turowski
 27.....James Tewksbury
 29Annabelle Williams

March Birthdays

5.....Chelette Williams
 7.....Hailey Dupree
 17Peyton Dupree
 18.....Henry Simons
 19.....Melody Knight
 25...Kneeda Williams, Childcare Sup.
 27.....Jim Mace
 27Josh Armstrong

March Anniversaries

13Cole & Maurine Simons
 18Steve & Judy Armstrong

I am sure that there are many members that I don't have your birthdates or anniversary dates. Any additions or corrections please contact the newsletter editor, Sharie Adrig at gadrig@comcast.net.

Members Serving in February

Altar Guild.....JoEllen Klempan
 ReaderBob Klempan

Members Serving in March

Altar Guild.....Sharie Adrig
 ReaderMaurine Simons

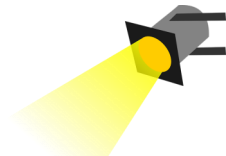
Sunday School for all ages!

We offer Sunday School at 9:00 AM for adults & children.

Pastor Blake holds his Wednesday Compline Service at 6:30 in the fellowship hall.

Men's fellowship breakfast will begin when Phase 3 is in effect. Location TBA .

According to the State Guidelines we are not having a Coffee Hour right now.



Spotlight

The "Door" is starting a new feature,. It works like this.....each issue of the Newsletter will feature 1-3 statements. Anyone who wants to share what they think the statement means and how it relates to Christians can simply write-up their opinion and email it to Sharie Adrig, the Newsletter Editor. Be sure to type Newsletter as the subject so Sharie will get it. Also, be sure you indicate which statement you are responding to i.e.,, #1, #2, etc. And finally, title your response "SPOTLIGHT". Who knows, we may have a dozen responses to share and compare. We may even come up with a topic for one of Pastor Blake's sermons. Look for "SPOTLIGHT" future issues of the Wittenberg Door. This is going to be fun!

Larry Farner